
WebView installation instructions

Installation instructions for WebViews/BC

Version 3.2 (2017-03-17)

Content

1	Overview	2
2	Installation of Internet Information Server (IIS).....	2
3	Preparation of the database	4
4	Installation of the Website	5
4.1	Installation of the "WebView" application	5
4.1.1	Preparation for a "WebView" application	5
4.1.2	Add Website in IIS.....	5
4.2	Installation of the "Business Controller" application	6
4.2.1	Preparation for a "Business Controller" application.....	6
4.2.2	Add Website in IIS.....	6

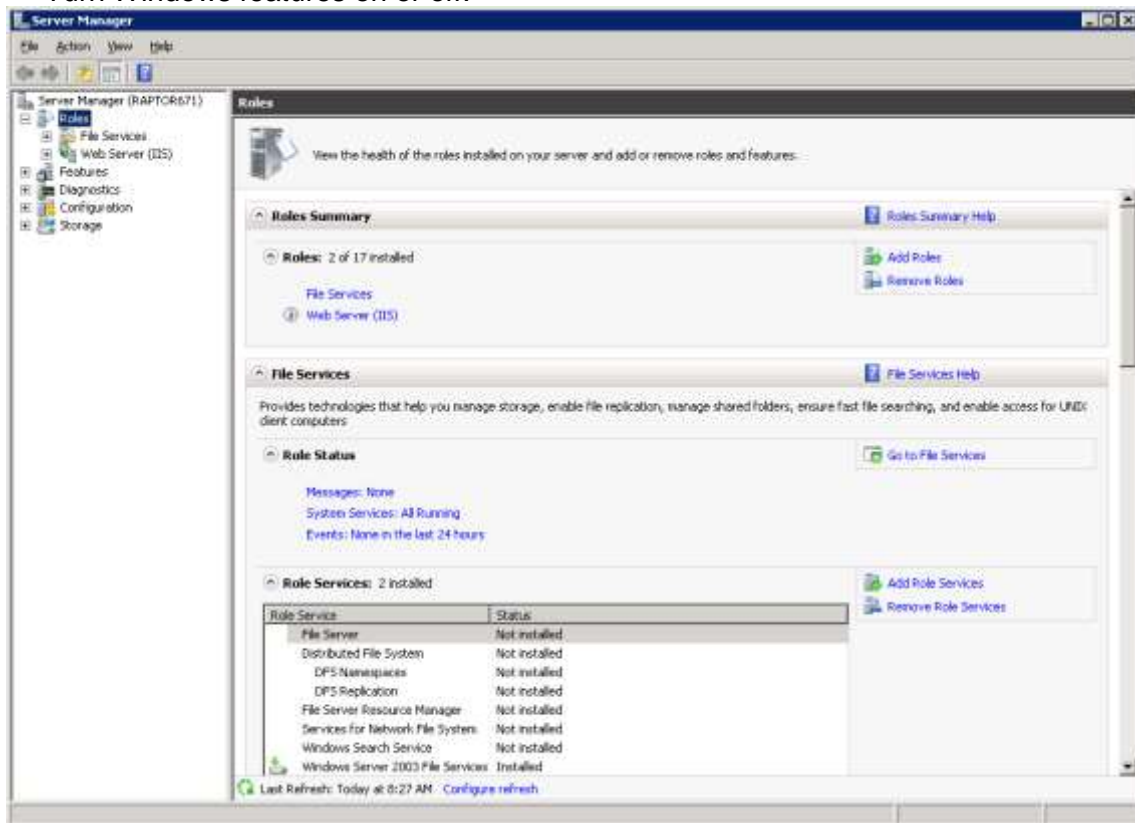
WebView installation instructions

1 Overview

This document describes how to set up the WebView and Business Controller applications on a computer, preferably on a server.

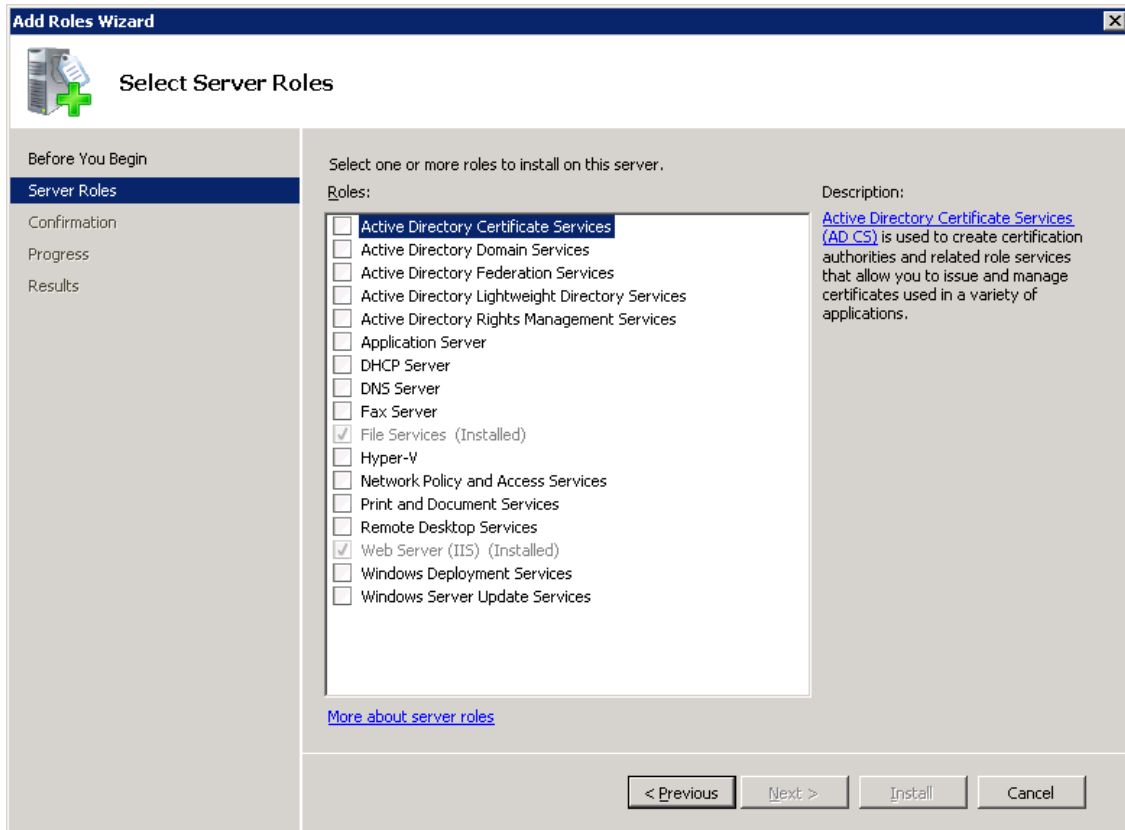
2 Installation of Internet Information Server (IIS)

First, please open the Server Manager via Start → Control Panel → Programs and Features → Turn Windows features on or off.

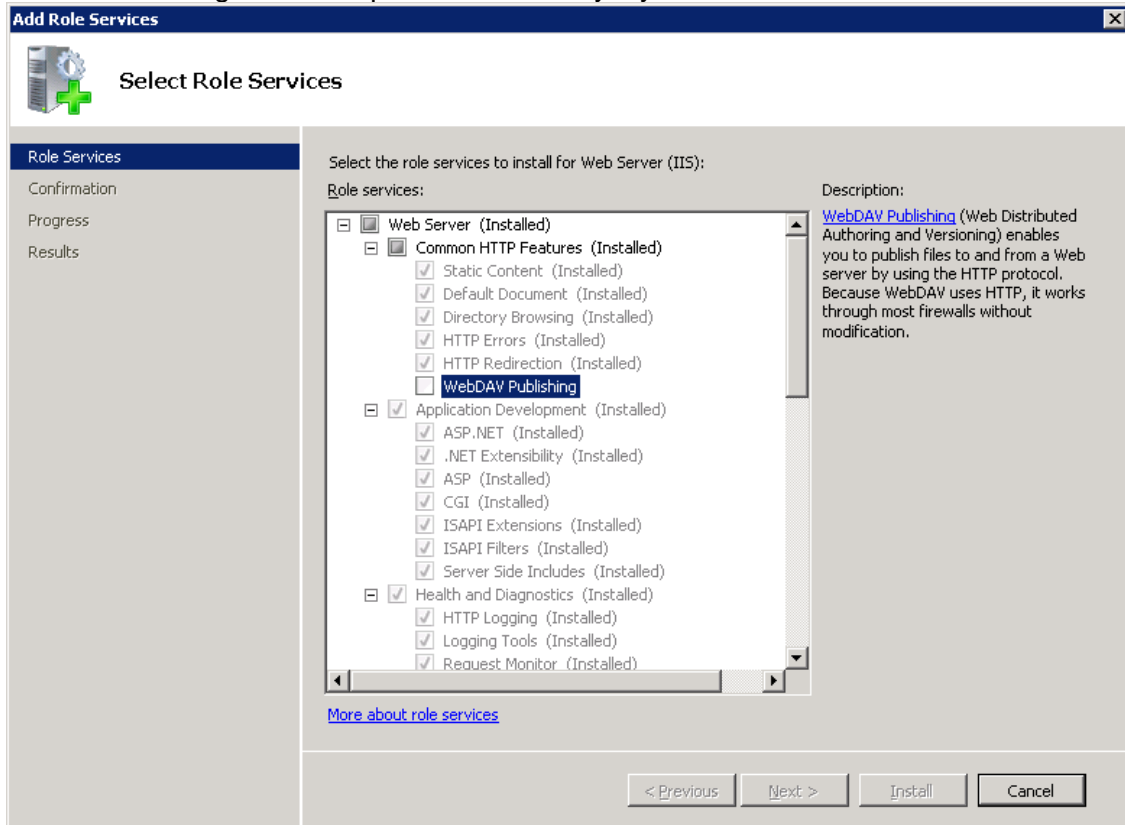


WebView installation instructions

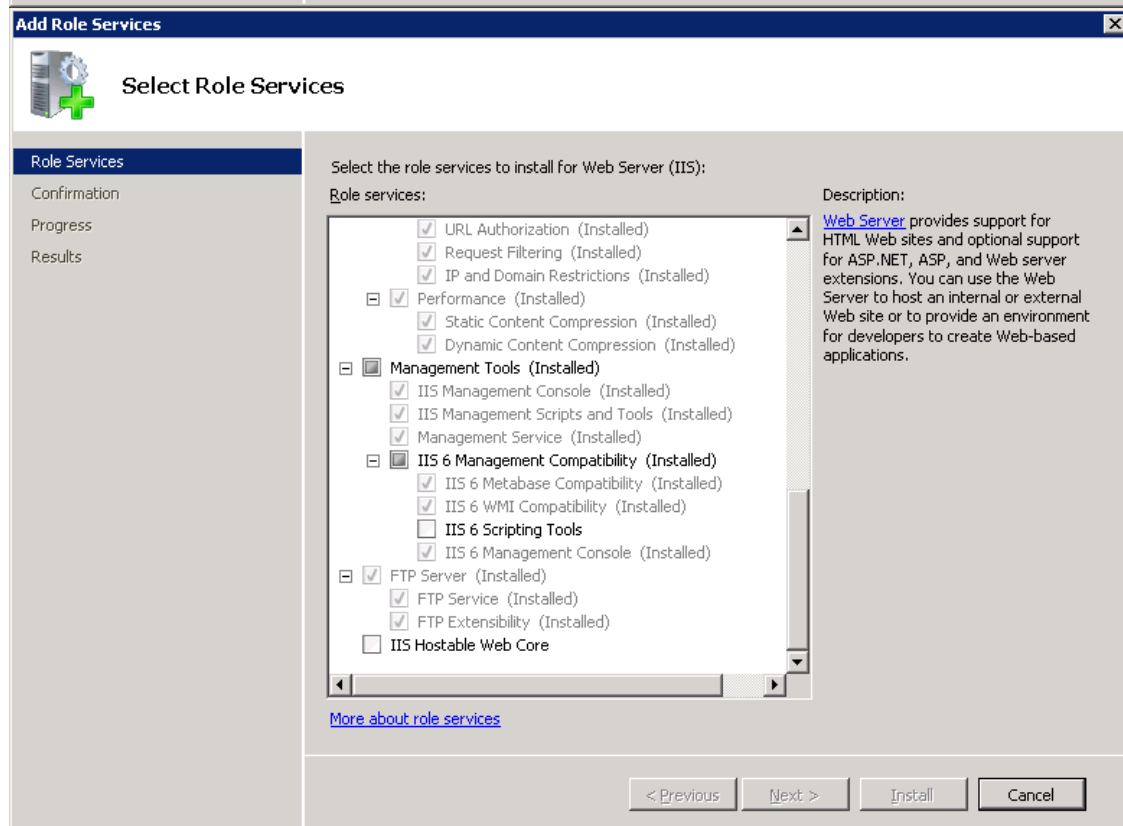
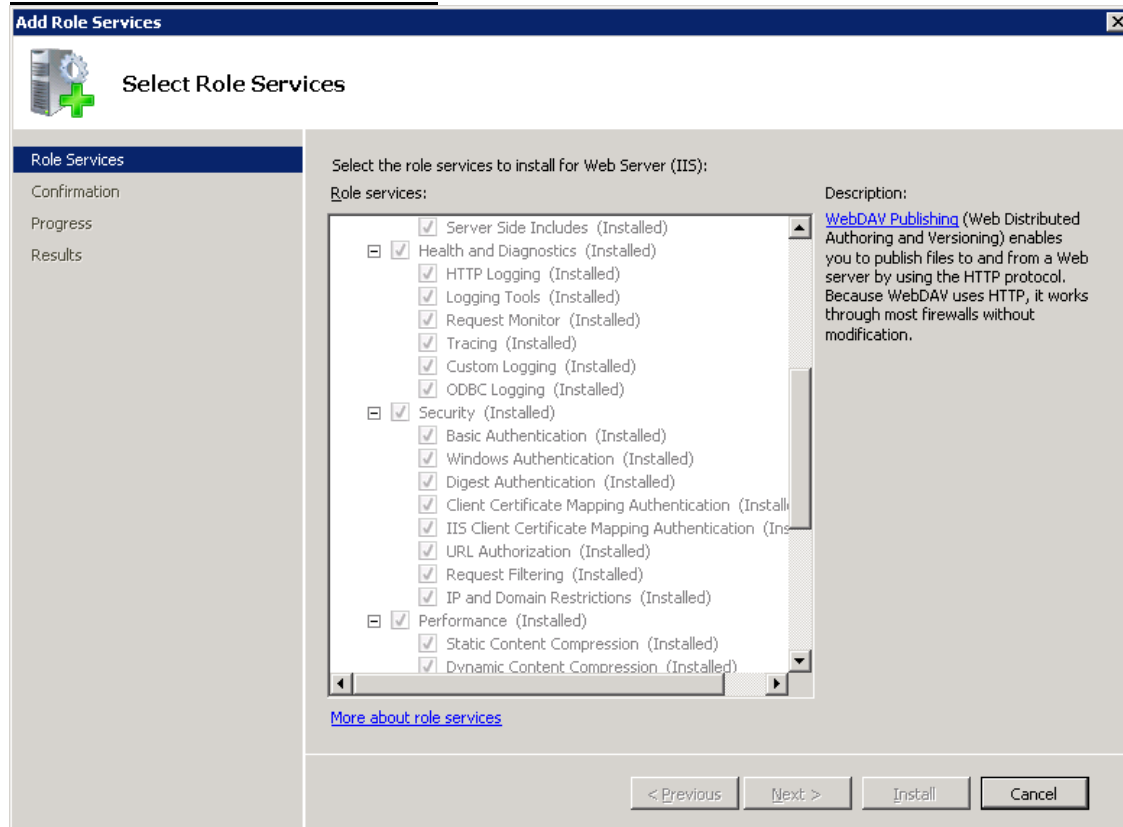
To add the role of IIS, tick Roles on left panel, click on Add roles and select the IIS role, then continue the installation.



Select the all roles services, excluding Directory Browsing, WebDAV Publishing, CGI, ODBC Logging, Management Service, IIS6 Management Compatibility, and IIS Hostable Web Core. Select IIS Management Scripts and Tools only if you need it.



WebView installation instructions



3 Preparation of the database

In the IB32DB, there must be the WebView tables present. They can be recognized with their start with W_. If they are missing, execute the script create_web_tables_3.2.sql in the Management Studio. It can be found in the WebView package. The result of the script must be ok, that means no red lines in the result pane. In case of problems contact inboard.

WebView installation instructions

4 Installation of the Website

4.1 Installation of the "WebView" application

4.1.1 Preparation for a "WebView" application

Please unzip the archive you received.

Replace the infoboard.lic of the server with the one from the archive which contains an additional user for the WebView; the destination default path is "C:\Program Files (x86)\HC Software\ infoBoard Server\".

Create a user "WebView" as Owner by using the Administrator login in the infoBoard client. Give that user Owner rights on the planning board(s) you want to use in the WebView.

In the unzipped directory, edit the file web.config, section <applicationSettings>. You must enter the following settings:

IBServerIP – IP or name of the server where infoBoard is installed, e.g. "CompanyServer"

IBServerPort – your infoBoard server port, usually "8010"

IBServerUserName – the user: "WebView"

IBServerPass – the password of the user "WebView"

DbServername – name of the instance of the SQL server like e.g.
"CompanyServer\SQLExpress"

DbCatalog – name of the database, usually "IB32DB"

DbUser – SQL user, usually "sa"

DbPassword – SQL password, usually that of user "sa"

UseOdbc – please set to "False"

WindowsAuth – please set to "False"

Language – your language, "en-GB" or "en-US"

Copy the unzipped directory contents to the newly created directory C:\inetpub\IBWeb.

Continue with Add website in IIS.

4.1.2 Add Website in IIS

Start the IIS Manager.

In the left pane, expand the computer name, then right click on "Sites" and choose "Add Web Site".

Site name is "IBWeb", physical path is C:\inetpub\IBWeb. With the port, you have the choice of keeping port 80 and assigning another port to the "Default Web Site", or to assign an unused port like 8080 here.

Click on "Application Pools" in the left pane to select them. Right click on "IBWeb" and select "Advanced Settings". Set ".NET framework version" to 2.0 and "Enable 32-bit Applications" to True and "Load User Profile" to True, then confirm with "Ok".

Expand "Sites" in the left pane, and click on "IBWeb" to select it. Check if the highest line of "Default Document" is "WebViews/Base/IBLinkPage.aspx" and if it is not there, add it. Please note that there is no leading slash in the entry.

WebView installation instructions

Click on “IBWeb” in the left pane again. “Stop” the Website, if applicable, and “Start” it afterwards.

Check if the Website is installed correctly with “Browse *:80 (http)”. Note: You have a predefined user “test” with password “test”.

4.2 Installation of the “Business Controller” application

4.2.1 Preparation for a “Business Controller” application

Please unzip the archive you received.

In the unzipped directory, edit the file web.config, section <applicationSettings>. You must enter the following settings:

DbServername – name of the instance of the SQL server e.g.
“CompanyServer\SQLExpress”

DbCatalog – name of the database, usually “IB32DB”

DbUser – SQL user, usually “sa”

DbPassword – SQL password, usually that of user “sa”

UseOdbc – please set to “False”

WindowsAuth – please set to “False”

Copy the unzipped directory contents to the newly created directory C:\inetpub\IBBC.

Continue with Add website in IIS.

4.2.2 Add Website in IIS

Start the IIS Manager.

In the left pane, expand the computer name, then right click on “Sites” and choose “Add Web Site”.

Site name is “IBBC”, physical path is C:\inetpub\IBBC. With port, you have the choice of keeping port 80 and assigning another port to the “Default Web Site”, or to assign an unused port like 8080 here.

Click on “Application Pools” in the left pane to select them. Right click on “IBBC” and select “Advanced Settings”. Set “.NET framework version” to 4.0 and “Enable 32-bit Applications” to True and “Load User Profile” to True, then confirm with “Ok”.

Expand “Sites” in the left pane, and click on “IBBC” to select it. Check if the highest line of “Default Document” is “indexBC.html” and if it is not there, add it.

Click on “IBWeb” in the left pane again. “Stop” the Website, if applicable, and “Start” it afterwards.

Check if the Website is installed correctly with “Browse *:80 (http)”. Note: You have a predefined user “test” with password “test”.